

Western Rivers Initiative

Vision: Rio Grande and Colorado River basins are sustained as healthy and resilient river ecosystems, securing livable landscapes essential for birds, wildlife and people.



Photo by Greg Lasley

Yellow-billed Cuckoo

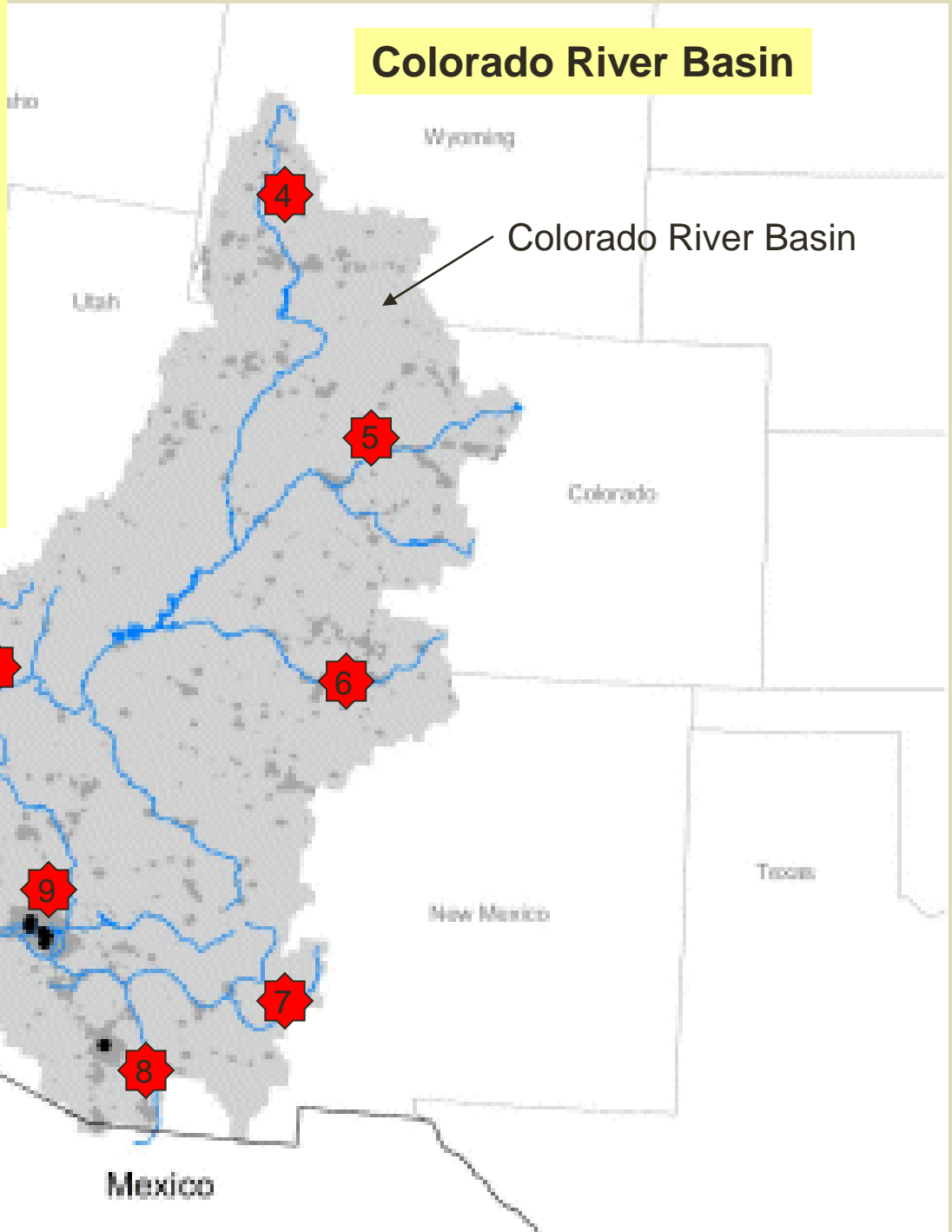


Important Bird Area Regional Focal Areas

- 1-Lower Colorado River IBAs (8) AZ-CA
- 2-Southern Nevada Riparian and Lake IBAs (4)
- 3-Southeast Utah Riparian IBAs (3)
- 4- Southwest Wyoming Riparian IBAs (3)
- 5- Northeast Colorado Riparian IBAs (2)
- 6-Southeast Colorado Riparian IBAs (2)
- 7-Upper Gila River IBAs (3) NM
- 8- San Pedro River Global IBAs (2) AZ
- 9-Central Arizona Riparian IBAs (4)

(#) – Number of IBAs

Colorado River Basin





Rio Grande Basin

Important Bird Area Focal Areas

1-Upper Rio Grande State IBAs

2-Middle Rio Grande Global IBAs

3-Elephant Butte Lake State Park State IBA

4-NM Lower Rio Grande Bosques State IBA

5-Bitter Lake NWR Global IBA and Ramsar Wetland

6-Dolan Falls, Devil River State IBA

7-Santa Ana NWR, Alamo, TX

8-Sable Palm Sanctuary Brownsville, State IBA (potential A4 Global)

9. Rio Grande Coastal Tip (potential A1 Global)

9-Central Arizona Riparian IBAs

Threats:

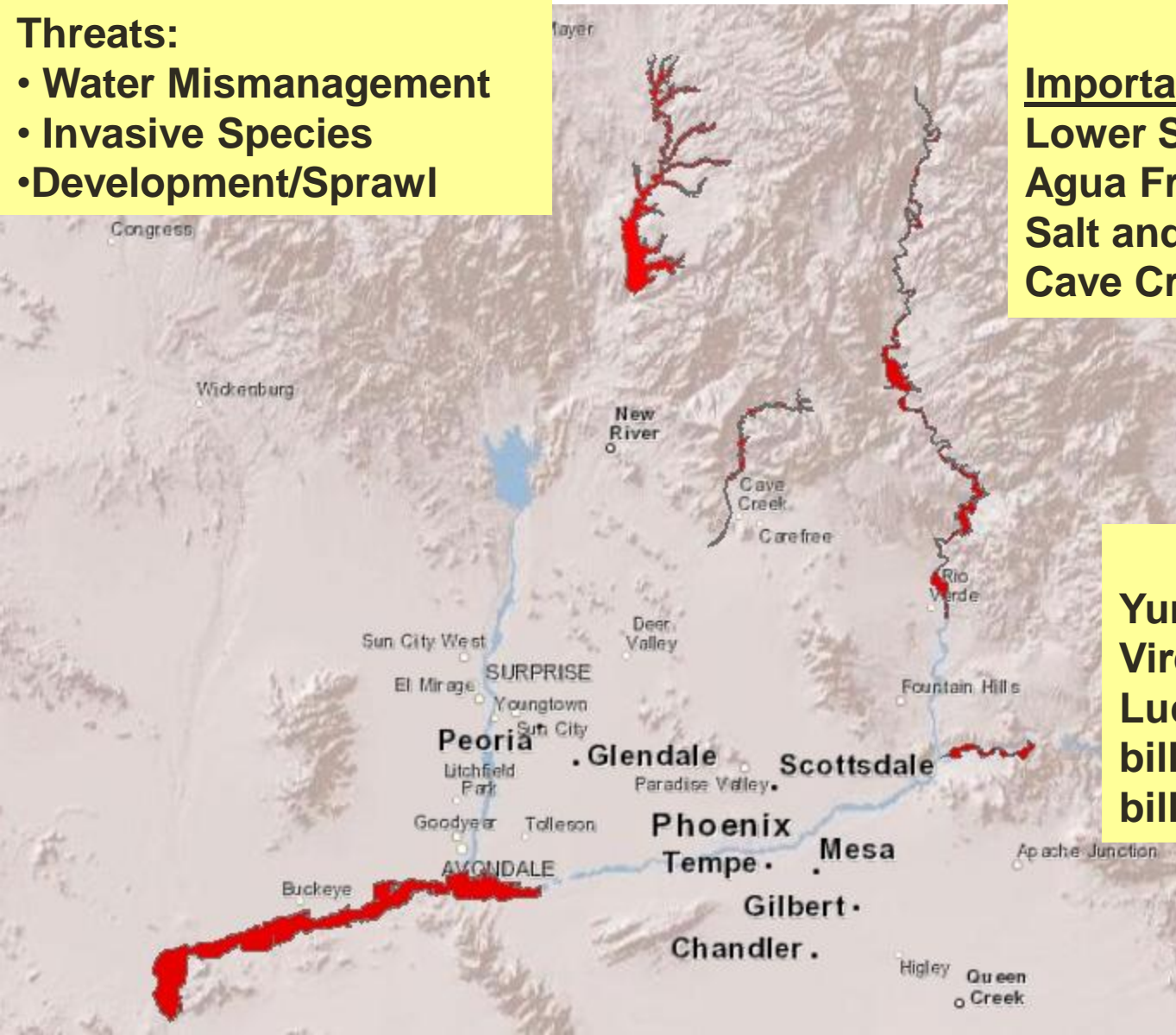
- Water Mismanagement
- Invasive Species
- Development/Sprawl

Important Bird Areas

Lower Salt and Gila Rivers
Agua Fria NM Riparian
Salt and Verde Rivers
Cave Creek Ecosystem

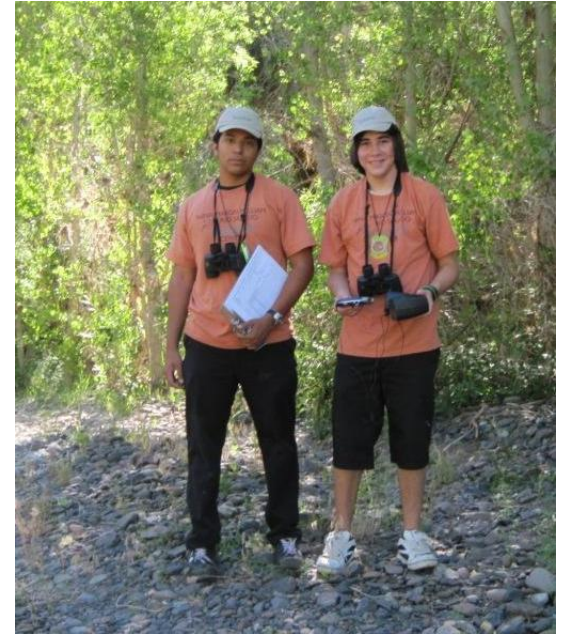
BIRDS

Yuma Clapper Rail, Bell's Vireo, Abert's Towhee, Lucy's Warbler, Long-billed Curlew, Yellow-billed Cuckoo



Agua Fria NM Riparian Corridor IBA

- Sonoran Audubon Society is a member of Agua Fria Watershed Partnership and has a Together Green Toyota NAS Grant for watershed community outreach
- Partnership with Friends of Agua Fria National Monument
- Nina Mason Pulliam Rio Salado Audubon Center River Pathways program (BLM partnership)



Lower Salt and Gila Rivers IBA

- Sonoran Audubon Society surveys winter birds
- Tres Rios Nature Festival partner
- Sonoran Audubon Estrella Park bird walks
- Sonoran Audubon members participates in Two CBC's

